

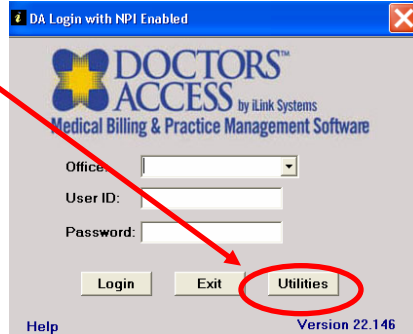
Updating Doctors Access

For High-Speed Internet Users

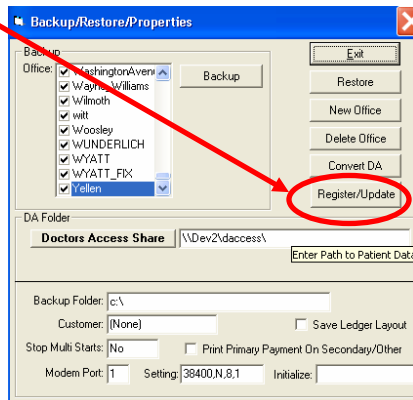
To get the update for the new NPI feature you will need to have everyone log out of Doctors Access and be at your main computer/server.

From the log in screen of Doctors Access:

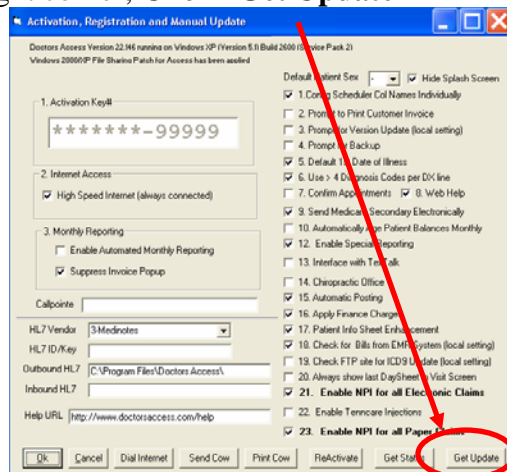
1.) Click Utilities



2.) Click Register/Update



3.) In the bottom right corner, Click "Get Update"



Note: If the system presents a msg that you are already up to date, click "OK" and then click "Get Update" again. If you still cannot get the update, go to www.doctorsaccess.com and click "Live Support" to chat with a customer service rep.

Updating Doctors Access

For High-Speed Internet Users

4.) For users running DA Version 22.192 or greater, Click “Get Update”

Doctors Access Version 22.192 running on Windows XP (Version 5.1) Build 2600 (Service Pack 2)
Windows 2000/XP File Sharing Patch for Access has been applied

Default Patient Sex: [Dropdown] Hide Splash Screen

HL7 Vendor: [Dropdown]
HL7 ID/Key: [Text Field]
Outbound HL7: [Text Field]
Outbound (ACK): [Text Field]
Inbound HL7: [Text Field]

1. Activation Key#
*****-99999

2. Internet Access
 High Speed Internet (always connected)

3. Monthly Reporting
 Enable Automated Monthly Reporting
 Suppress Invoice Popup

Callpoint: [Text Field]
Help URL: http://www.doctorsaccess.com/help

Buttons: OK, Cancel, Send Cow, Print Cow, ReActivate, Get Status, **Get Update**

Note: If the system presents a msg that you are already up to date, **click “OK”** and then **click “Get Update”** again. If you still cannot get the update, go to www.doctorsaccess.com and **click “Live Support”** to chat with a customer service rep.

** Sometimes your firewall will prevent you from getting the update manually. You can contact your Tech to assist with the firewall issue and ensure that future updates can be received via the internet.

Once the update is complete, you may be prompted to reboot your computer or restart Doctors Access.

When the other work stations log into Doctors Access **AFTER** the server is updated, they too will be prompted to apply the update. Follow the prompts to automatically update other workstations.

** See [NPI Notification.pdf](#) for assistance with inputting your NPI information and any additional questions regarding the NPI you may have.